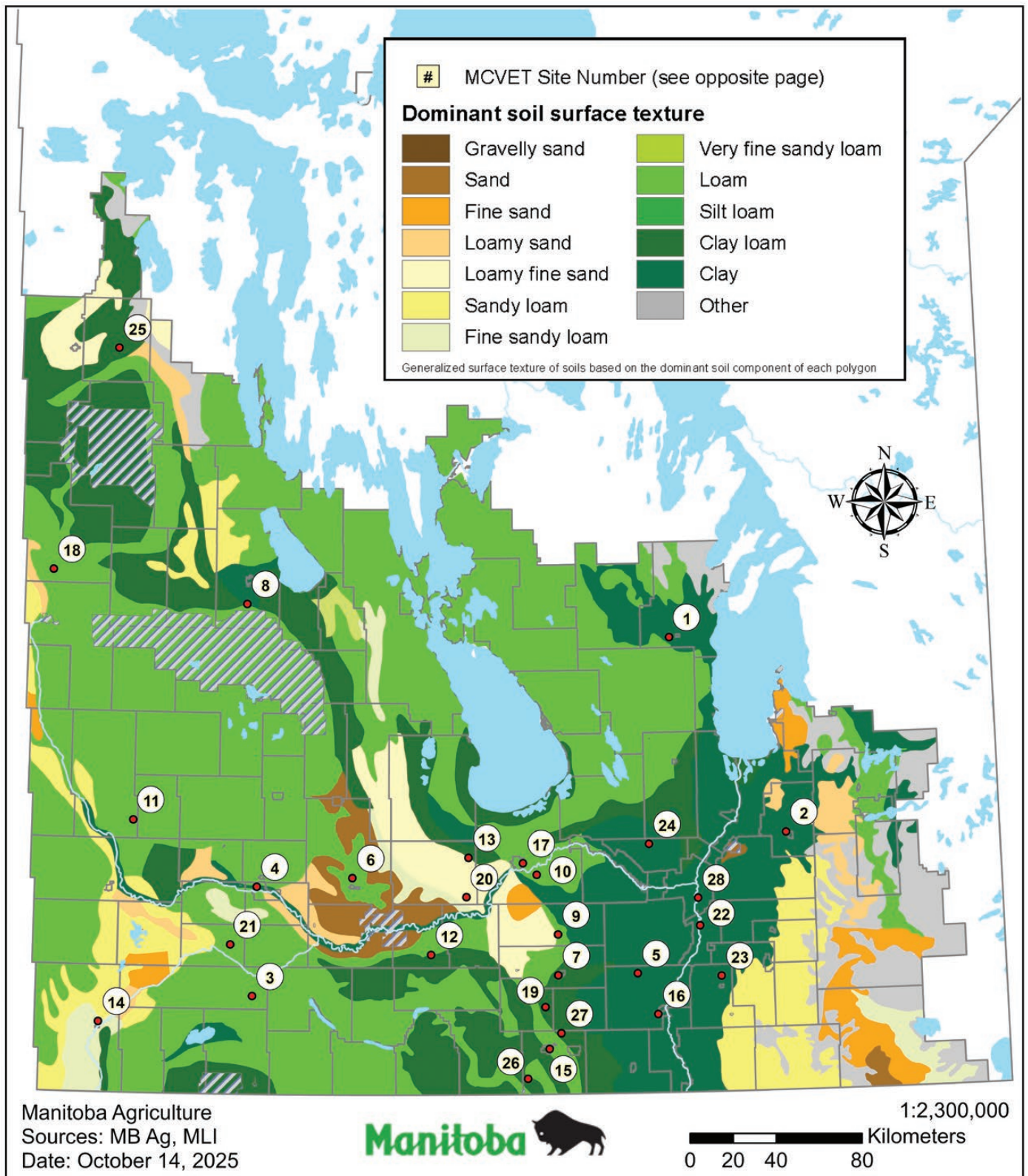


# 2025 Locations of Variety Evaluation Trials



Site Location	Contractor(s)	Soil Texture	Internal Soil Drainage	Precipitation <sup>1</sup>		Growing Degree Days <sup>1</sup>		Weather Station Used
				Actual (mm)	% of Normal	Actual	% of Normal	
1 Arborg	PESAI	clay	imperfect	140	47%	1691	110%	Arborg
2 Beausejour	PESAI	clay loam	imperfect	232	62%	1801	109%	Beausejour
3 Boissevain	Ag-Quest Inc.	loamy	imperfect	295	102%	1743	108%	Minto
4 Brandon	Agriculture & Agri-Food Canada	clay loam	well	227	68%	1763	114%	Brandon (MBFI)
5 Brunkild	TapRoot Research Ltd.	heavy clay	imperfect	306	95%	1832	107%	Brunkild
6 Carberry <sup>2</sup>	CMCDC	clay loam	well	232	71%	1641	105%	Carberry (EC)
7 Carman	University of Manitoba, Ag-Quest Inc.	loam	imperfect	234	66%	1872	112%	Carman
8 Dauphin	Ag-Quest Inc.	silty clay loam	imperfect	245	77%	1680	109%	Dauphin
9 Elm Creek	HBG	coarse loam	imperfect	353	109%	1895	111%	Elm Creek
10 Elm River	Syngenta	silty clay	imperfect	318	95%	1917	114%	Portage la Prairie
11 Hamiota	Ag-Quest Inc.	clay loam	well	218	66%	1641	110%	Hamiota
12 Holland	Ag-Quest Inc.	loamy	imperfect	262	77%	1801	109%	Holland
13 MacGregor	Ag-Quest Inc.	coarse loam	imperfect	318	95%	1917	114%	Portage la Prairie
14 Melita	WADO	loamy	imperfect	343	117%	1794	108%	Melita
15 Morden <sup>2</sup>	AAFC Morden, DL Seeds	clay loam	well	299	86%	1704	96%	Morden
16 Morris	Ag-Quest Inc., TapRoot Research	heavy clay	imperfect	269	67%	1893	111%	Morris
17 Portage la Prairie	CROP/ICMS	sandy loam	imperfect	318	95%	1917	114%	Portage la Prairie
18 Roblin	PCDF	loamy	well	283	84%	1555	111%	Roblin
19 Rosebank	Nutrien	loamy	imperfect	299	86%	1704	96%	Morden
20 Rossendale	Ag-Quest Inc.	sandy loam	imperfect	260	78%	1785	107%	Bagot
21 Souris	Ag-Quest Inc.	loamy	imperfect	181	54%	1742	110%	Souris
22 St. Adolphe <sup>2</sup>	Richardsons, Murphy et al	heavy clay	imperfect	279	74%	1909	112%	St. Adolphe
23 St. Pierre	Ag-Quest Inc.	heavy clay	imperfect	329	87%	1882	110%	St. Pierre
24 Stonewall	Solum Valley Biosciences Inc.	clay loam	imperfect	251	66%	1857	107%	Stonewall
25 Swan River	New Era Ag Technologies	clay loam	imperfect	261	84%	1679	115%	Swan River
26 Thornhill	Ag-Quest Inc.	loamy	well	314	107%	1704	105%	Windygates
27 Winkler	Ag-Quest Inc., Maizex	loamy	well	329	91%	2009	116%	Winkler
28 Winnipeg <sup>2</sup>	University of Manitoba	silty clay	imperfect	239	70%	1882	112%	Winnipeg

<sup>1</sup> Weather data is reported from May 1 to October 1 and reflects the percentage of the normal accumulations as calculated using the 30 year long-term average.

<sup>2</sup> Weather datasets are incomplete. Carberry is missing 12 days, Morden is missing 20 days, Winnipeg is missing 4 days.

Seeding and harvest dates for individual trials can be found at the bottom of the Yield Comparisons Tables located in the respective Crop Sections.

As per MCVET, MCC, NSAC and MPSG protocol's, all sites are fertilized at levels to achieve maximum crop performance. Weed control is applied as required to achieve a relatively weed free area. Insecticides are applied as required, while fungicides are not applied to any trials.

Any questions related to the sites found in Seed Manitoba can be directed to the individuals listed below:

**For canola contact Jared Bento at (204) 891-1273 or e-mail [jared@canolagrowers.com](mailto:jared@canolagrowers.com)**

**For grain corn, silage corn, and sunflowers, contact Surjit Bawa at (204) 918-3079 or e-mail [surjit@mbcropalliance.ca](mailto:surjit@mbcropalliance.ca)**

**For soybean and dry beans, contact Dennis Lange at (204) 324-4383 or e-mail [dennis.lange@gov.mb.ca](mailto:dennis.lange@gov.mb.ca)**

**For all remaining crop types, contact Uzzal Liton at (204) 441-0570 or e-mail [uzzal.liton@gov.mb.ca](mailto:uzzal.liton@gov.mb.ca)**

The data in this listing includes pedigreed seed crops that have successfully received, or are in the process of receiving, seed crop certification from the Canadian Seed Growers' Association (CSGA). Fields that were declined pedigreed status are not included in this listing. Data is provided for information purposes only. All users of the CSGA data use such data at their own risk. You and those who rely on the CSGA data cannot hold CSGA liable for omitted or incorrect seed listings. You agree to save CSGA harmless and fully indemnify CSGA from all losses, damages, liability, judgements, costs and expenses, which you or a user of the CSGA data sustain by disseminating or relying on such data. When purchasing seed, CSGA strongly recommends asking for official seed certification tags as your proof of CSGA certification. A copy of the mechanical purity and germination analysis test certificate should also be made available to you.